

EVENTO DE NETWORKING

HEALTHCARE & PHOTONICS

TECNOLOGIAS FOTÓNICAS APLICADAS AL SECTOR HEALTHCARE

26 MARZO/14

09.45h-17.00h
**Parc Audiovisual
de Catalunya**
Carretera BV-1274,
Km.1, 08225 Terrassa
(Barcelona)



**“Soporte a la innovación en
fotónica para empresas”**

*A unique “plug-and-play” innovation support model
connecting European companies to
the best in photonics research technology and expertise
tailored to specific business opportunities and need*

What are the market applications for photonics innovation?

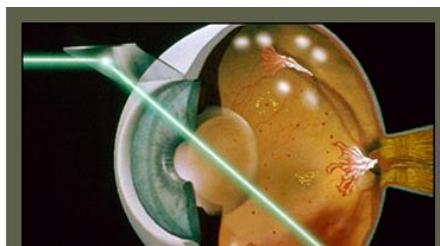
The EC identified 10 key application domains to support Europe in its innovation endeavours with photonics as a key-enabling technology*



Laser Material Processing



Machine Vision



Medical Technologies

* Source:
Photonics 21 Strategic
Research Agenda 2010



Optical Communications



Information Technology



Lighting



Flat Panel Displays



Solar Energy



Defence



Optical Systems

Why is there a need to support innovation?

If European companies want to keep their market share, continued product innovation with photonics will be crucial ...



But SMEs and large-scale companies often encounter road-blocks in their innovation efforts...



What are the major roadblocks to innovation – especially for SMEs?

Human resources & expertise



in-house experts & photonics expertise are missing



supporting an in-house R&D team is too expensive



identifying external experts is often a shot in the dark



dedicated task forces for photonics solutions are almost non-existent

Technology



in-house cutting-edge photonics technology is missing



investment risk is too high or financially irresponsible



multi-stop technology shopping fails; partial solutions are often incompatible





one-stop shop technology supply chains are almost non-existent

ACTPHAST has been specifically designed to offer a large-scale solution



CREATE

one-stop shop solutions provider based on the best technology platforms + plug-and-play task forces for photonics innovation composed of the best EU experts



REMOVE

photonics innovation roadblocks

AND

SUPPORT

European SMEs and LSCs



prioritize product innovation



open new markets



accelerate the time-to-market

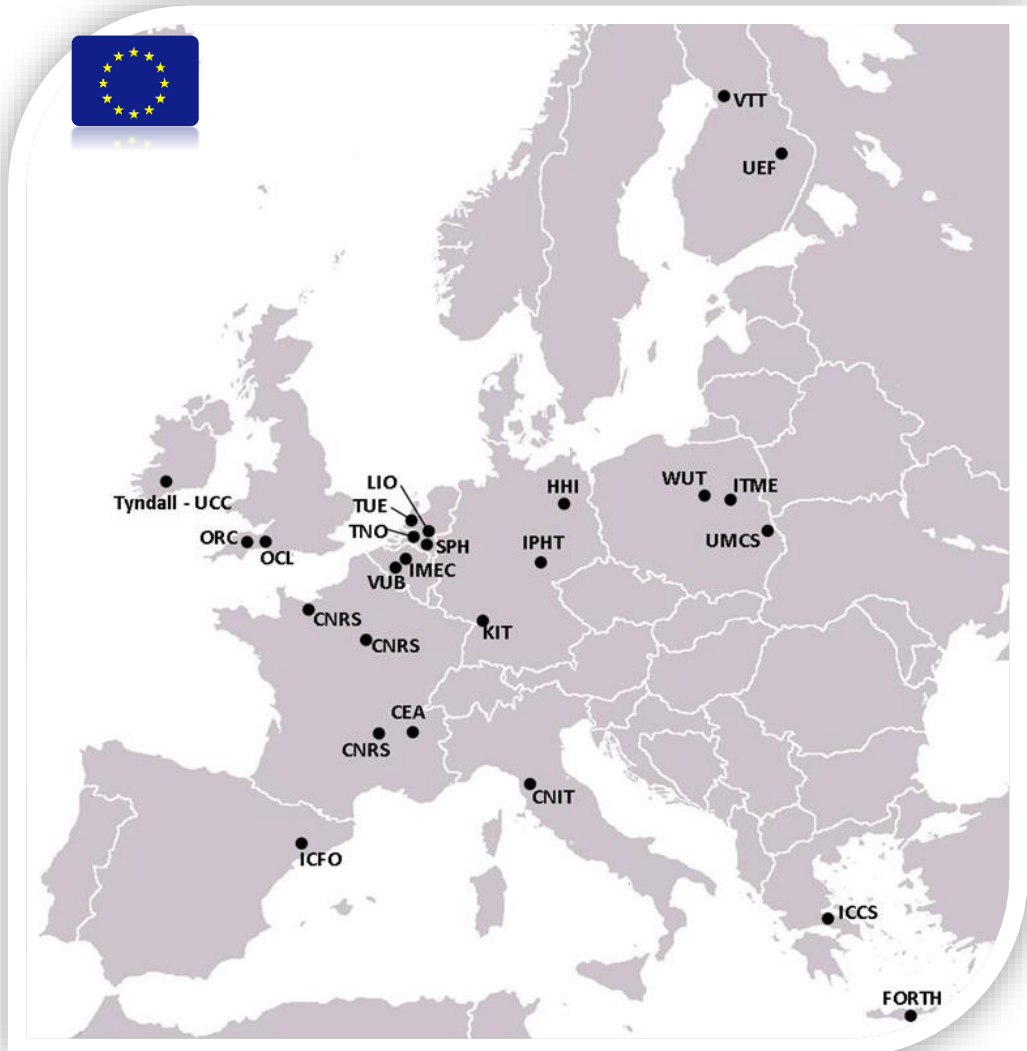


grow business



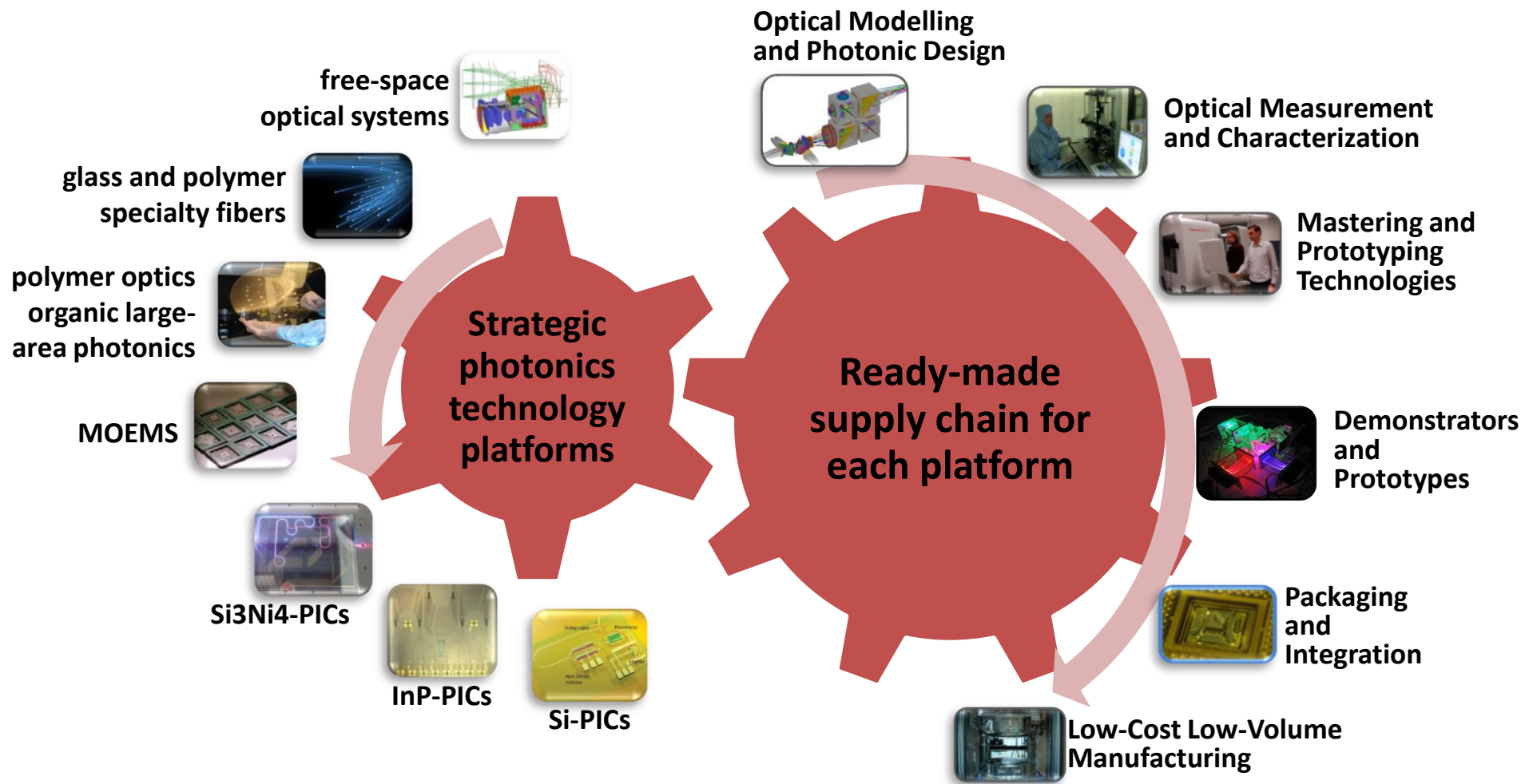
create jobs

What kind of support is available?



What kind of support is available?

ACTPHAST partners represent 7 strategic technology platforms, each a ready-made supply-chain for supporting industry from design to prototype



How are proposals for innovation projects evaluated?

8 key eligibility and evaluation criteria are used to select the best projects for support



European identity
& project objectives
in line with EC



pre-competitive
character of the request



demonstrable capacity
of ACTPHAST
to accomplish the request



level of requested subsidy
commensurate with
the support



quality of the
proposal including
consensus on IPR



innovative character
of the proposal



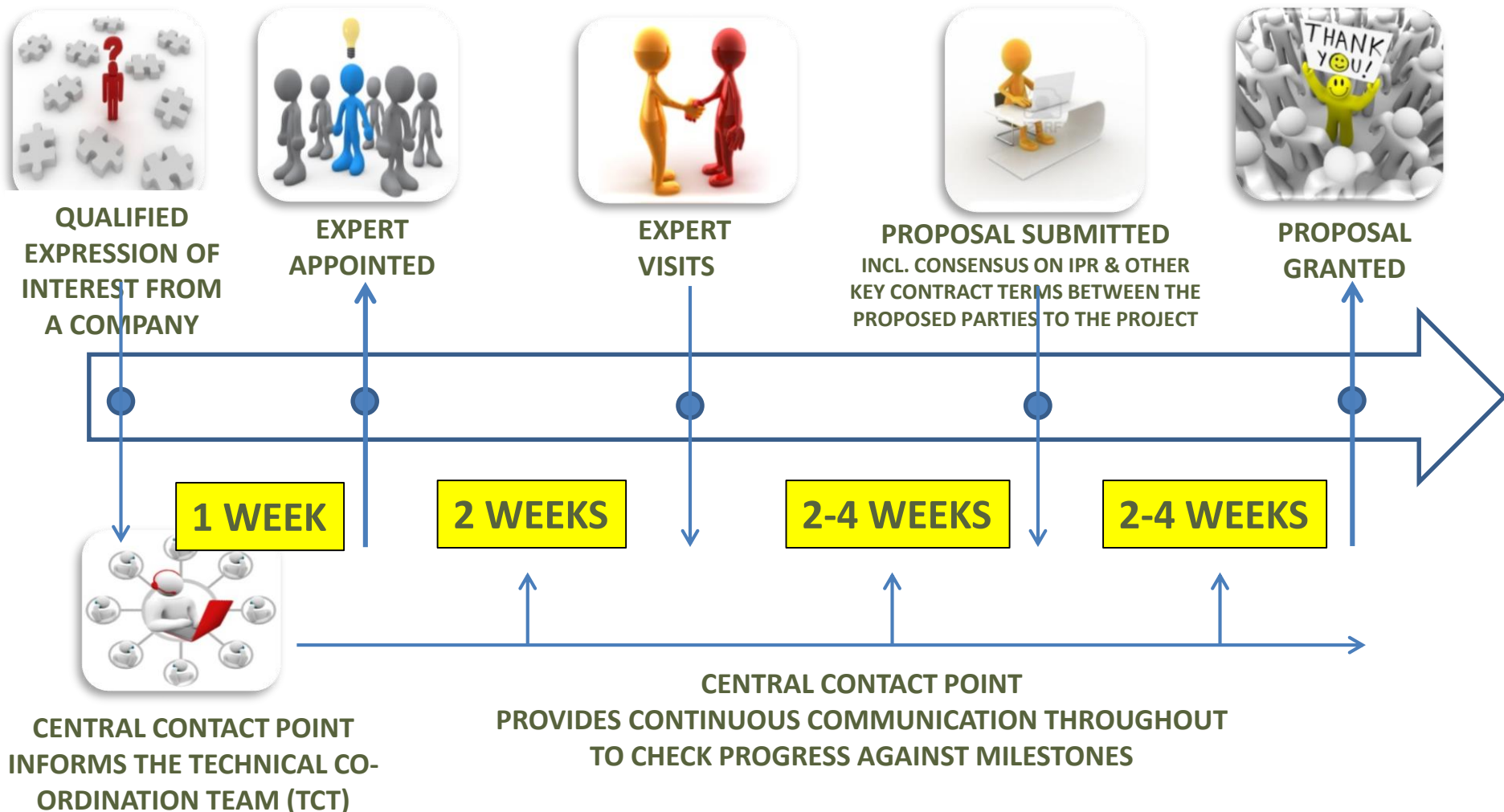
level of involvement
of the company



potential impact on
the company's business

Fast Decision-Making on Proposals

The proposal is prepared by the ACTPHAST expert so there is minimal paperwork for the company



Fast Execution of Projects

Contract templates help to accelerate the process; typically 0-3 months to sign the contract, and 6 months to complete the project



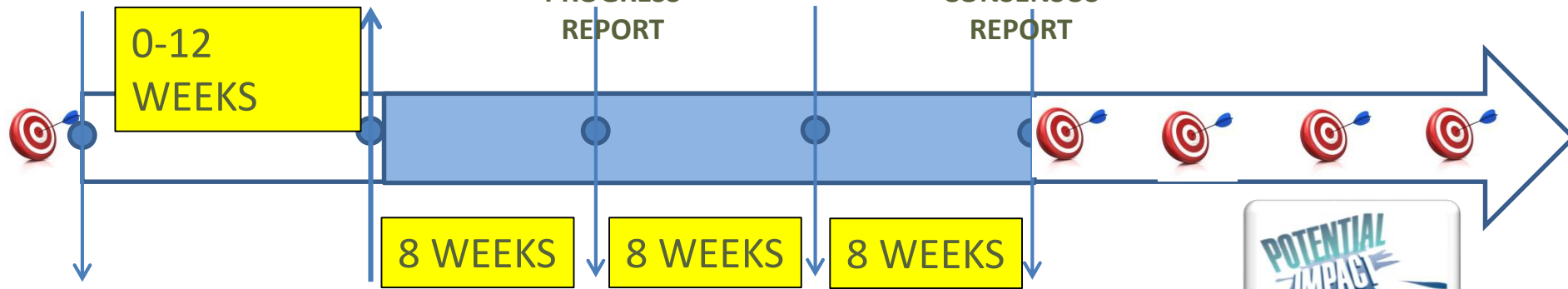
PROPOSAL GRANTED



PROGRESS REPORT



CONSENSUS REPORT



SPECIFIC PROJECT CONTRACT SIGNED BETWEEN THE PARTIES TO THE PROJECT, I.E. THE COMPANY AND ONE OR MORE RESEARCH INSTITUTES INVOLVED



CENTRAL CONTACT POINT ENQUIRES



CENTRAL CONTACT POINT ENQUIRES



PERIODIC IMPACT MEASUREMENT AFTER PROJECT COMPLETION, E.G. REVENUE & JOBS GROWTH IN SUPPORTED COMPANIES

Summary of key benefits to industry



focus is on the company's innovation challenge



one-stop shop for top experts and technology that best suit the business challenge



centralized contact point for fast response



subsidy lowers company's innovation threshold;
100% subsidy for SMEs
50% subsidy for large companies



low administration;
companies are seen as customers of the programme and most paperwork is done centrally on their behalf

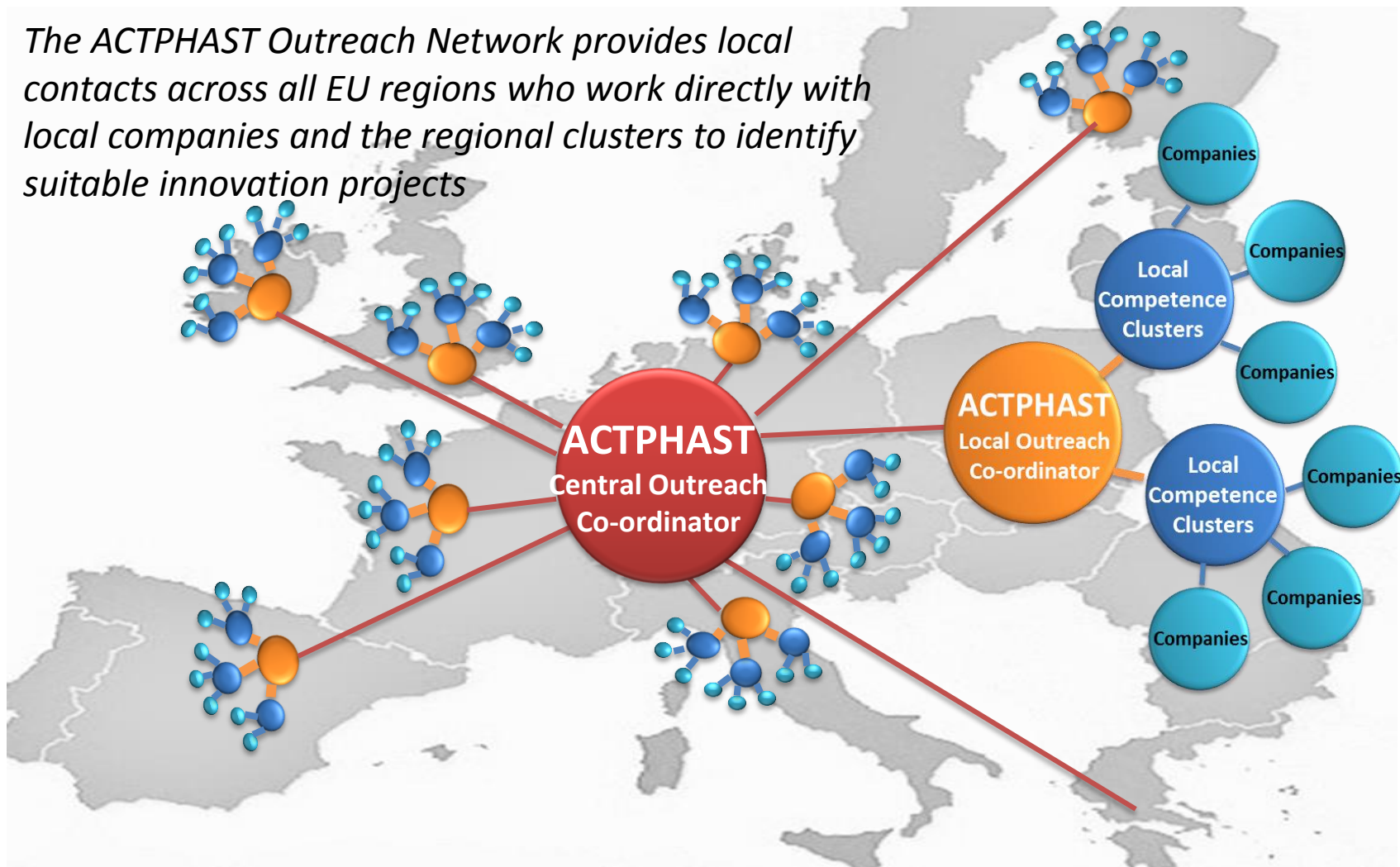


timely support;
typical project duration of 6 months aimed at faster time-to-market

How to start discussions?

Contact the Local ACTPHAST Outreach Co-ordinator for your region to start discussions on applying for support

The ACTPHAST Outreach Network provides local contacts across all EU regions who work directly with local companies and the regional clusters to identify suitable innovation projects



ACTPHAST is specifically designed to remove the major innovation roadblocks for European companies, providing support which is:

- ✓ ***Low cost – 100% subsidy for SMEs***
- ✓ ***Low risk – we find the right experts for you***
- ✓ ***Low admin – we do the paperwork for you***
- ✓ ***Fast turnaround – we complete projects within 6-9 months***

Q&A

Sergi.Ferrando@icfo.eu

ACTPHAST Local Outreach Coordinator for Spain and Portugal

www.actphast.eu