

B/S/H/



BSH – Jornada Ultraprecisión Láser

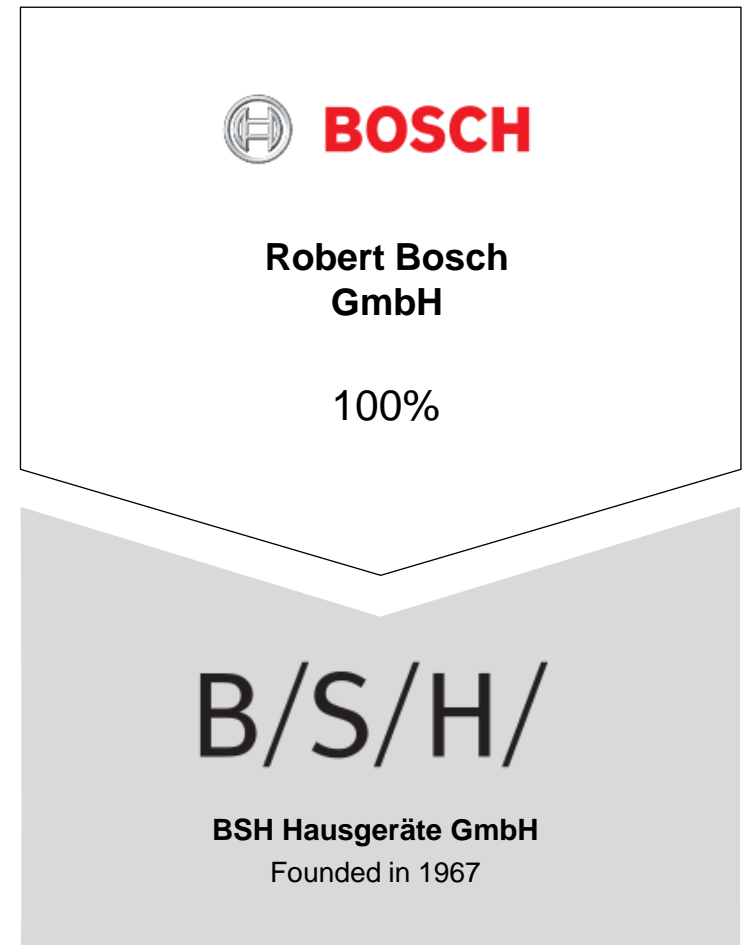
Noviembre 26, 2015

Montaña

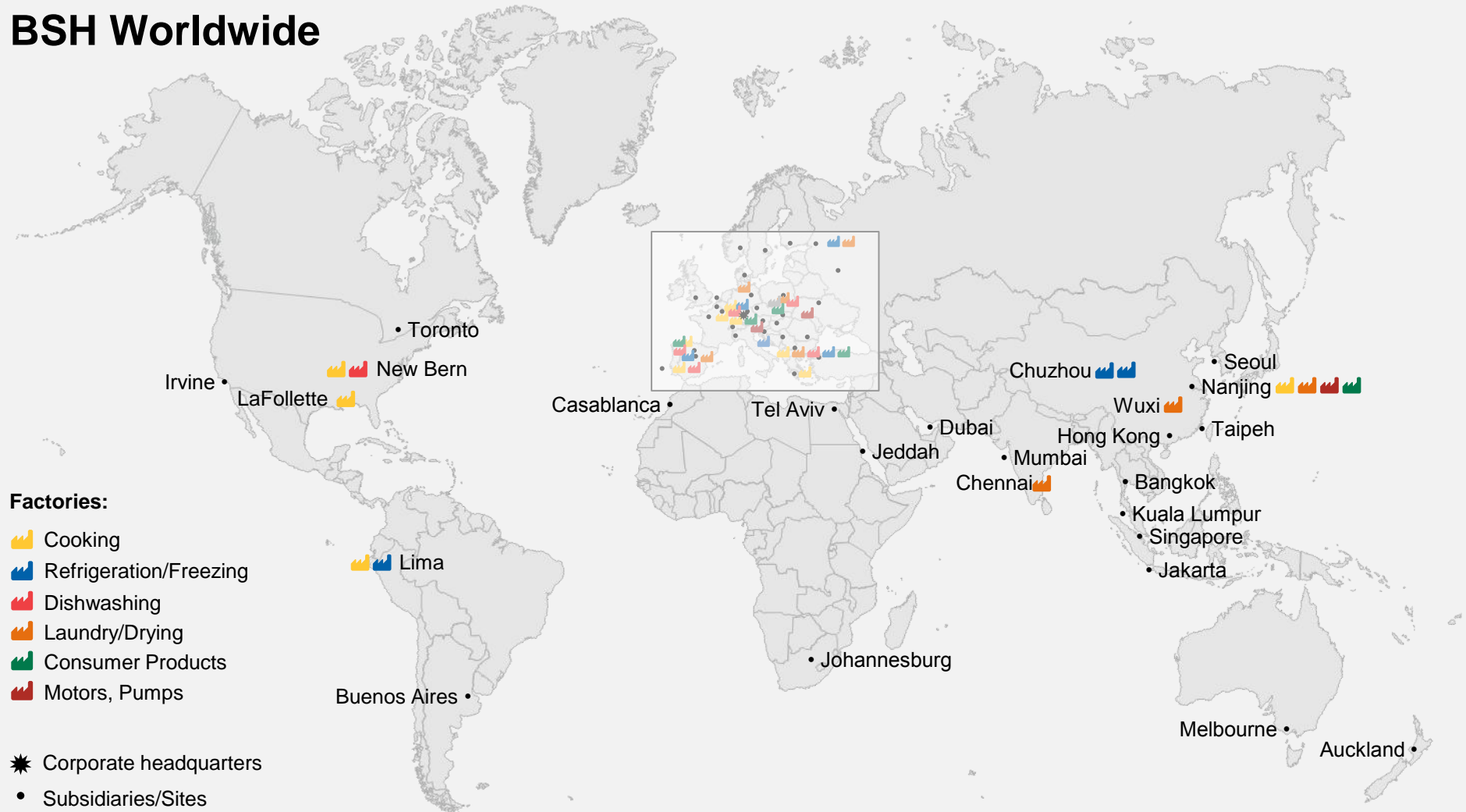


BSH at a Glance

- Founded in 1967 as a joint venture between Siemens AG and Robert Bosch GmbH
- Since the beginning of 2015 BSH exclusively belongs to the Bosch Group
- Market leader in Europe, No. 3 in the world
- Sales revenue: 10.5 billion Euros (2013)
- Product portfolio: all modern home appliances
- Employees worldwide: approximately 50,000
- BSH named as a top employer in numerous countries
- R&D expenditure: more than 300 million Euros
- Around 3,100 R&D specialists in BSH's international production and development network
- Customer service: around 7,000 specialists in 50 countries
- Energy efficiency and environmental protection throughout the value-added chain











BSH Worldwide



BSH Europe

Factories:

-  Cooking
-  Refrigeration/Freezing
-  Dishwashing
-  Laundry/Drying
-  Consumer Products
-  Motors, Pumps

-  Corporate headquarters
-  Subsidiaries/Sites



Our Brands

Main Brands



Special Brands



Regional Brands



BSH's product portfolio covers the entire spectrum for daily life

Cooking and Baking



Washing and Drying



Dishwashing



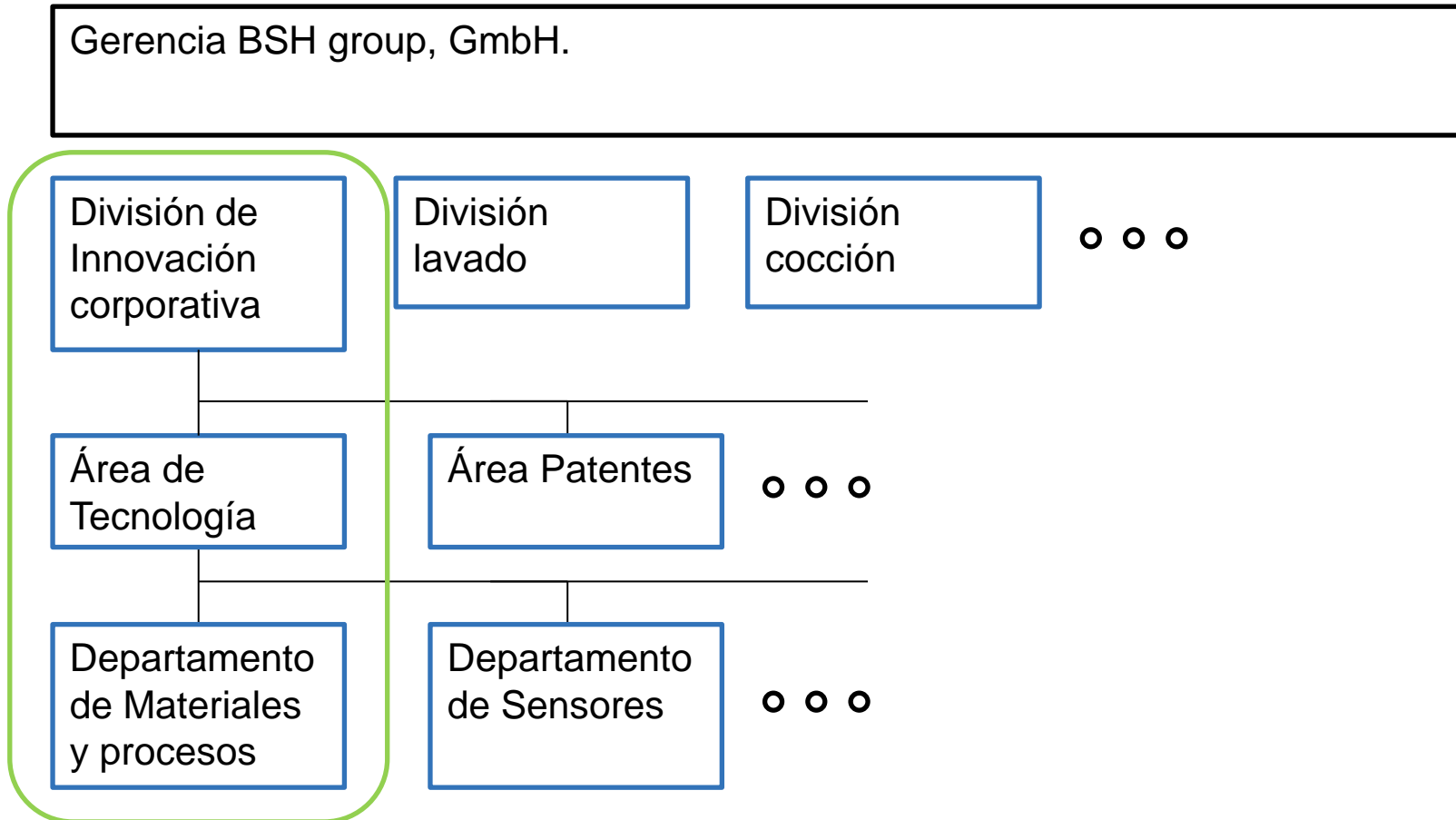
Refrigeration and Freezing



Consumer Products



CIV-TME. Quienes somos



BSH. Aplicaciones e intereses

Micromecanizado en polímeros

Retirar selectivamente material de una superficie polimérica a escala micrométrica de forma controlada y precisa.

Se busca:

- Baja afección térmica
- Precisión
- Calidad
- No deformación

Características principales:

- **ABS y PP**
- Profundidades inferiores a 2 mm
- Tamaño de motivos inferior a 600 μm
- Necesario una tecnología digital

Marcaje láser en color en metal

Marcaje estético una superficie metálica con la posibilidad de elegir el color deseado.

Se busca:

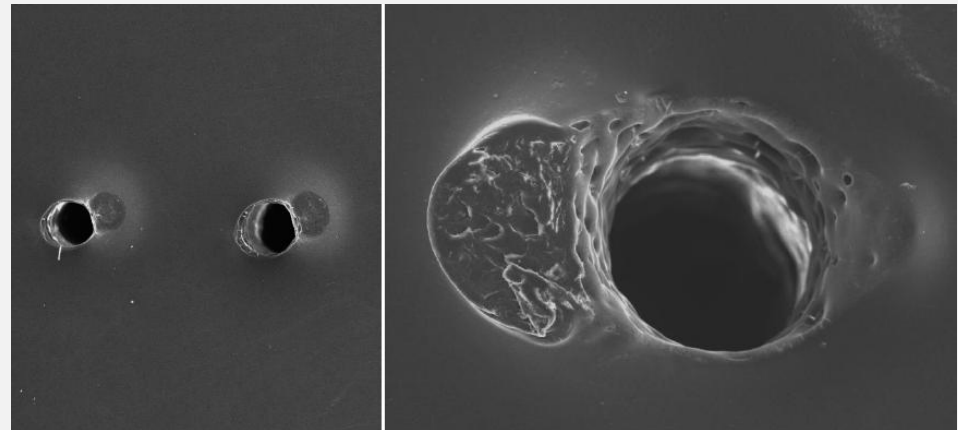
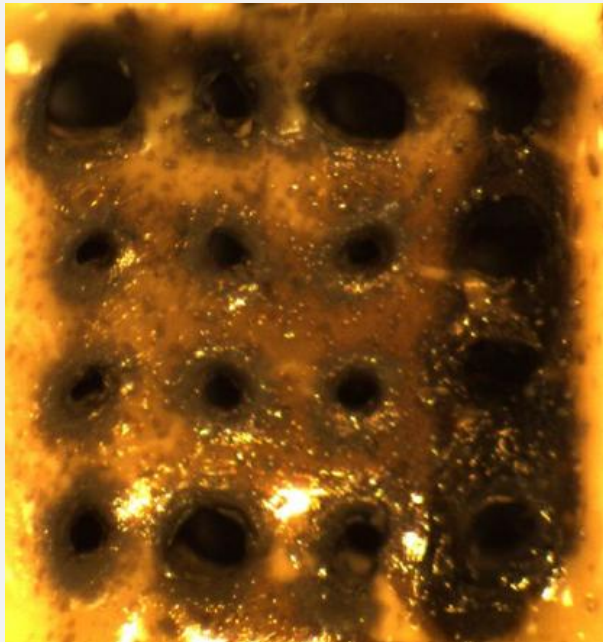
- Alta resistencia a corrosión
- Precisión
- Calidad
- No deformación

Características principales:

- **SST ferrítico, SST austenítico y Al**
- Colores intensos y estables
- Tiempo de ciclo inferior a 3 s/cm²
- Necesario una tecnología digital

BSH. Aplicaciones e intereses

Micromecanizado en polímeros



BSH. Aplicaciones e intereses

Marcaje láser en color en metal



