

FYLA WE LASER
THE NEW INDUSTRY



FYLA diseña y crea sistemas **laser** de fibra para su uso y acoplamiento a sistemas de Metrologia y Control, desde Imagen medica & Diagnostico hasta caracterizacion de superficies, a traves de tecnologias propietarias como ***laser blanco.**

*** Laser Blanco:** laser que emite entre 400nm y 2400nm

METROLOGIA + TEXTIL + WHITE LASER = LAB-IN-LINE



PRECISION

VOLUMEN

VELOCIDAD

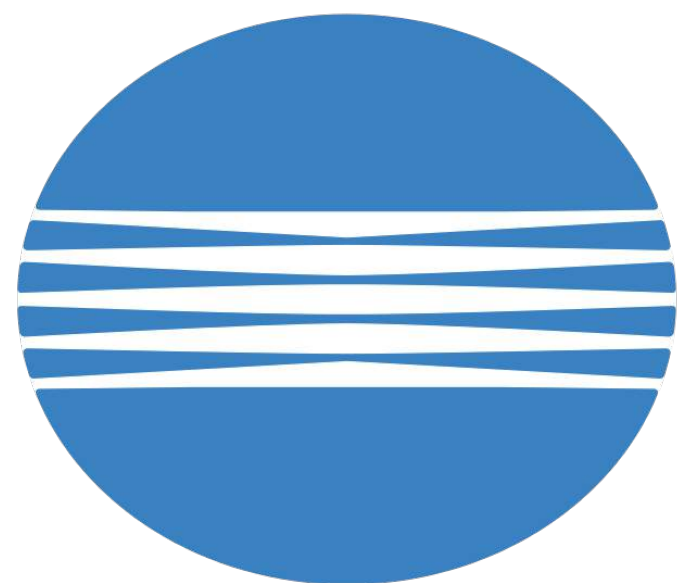
datacolor 



EVS -Your Quality Our Vision

 **x-rite**
right on **color**

ISRA
V I S I O N



KONICA MINOLTA

MVT. 

+ Velocidad

AVT.

ISRA
VISION

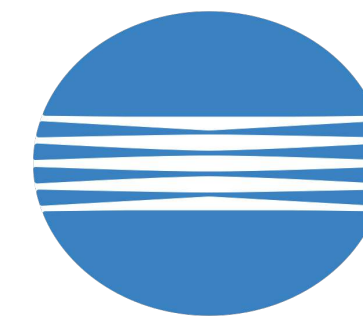


EVS -Your Quality Our Vision

FYVA

WE LASER
THE NEW INDUSTRY

 **x-rite**
right on color

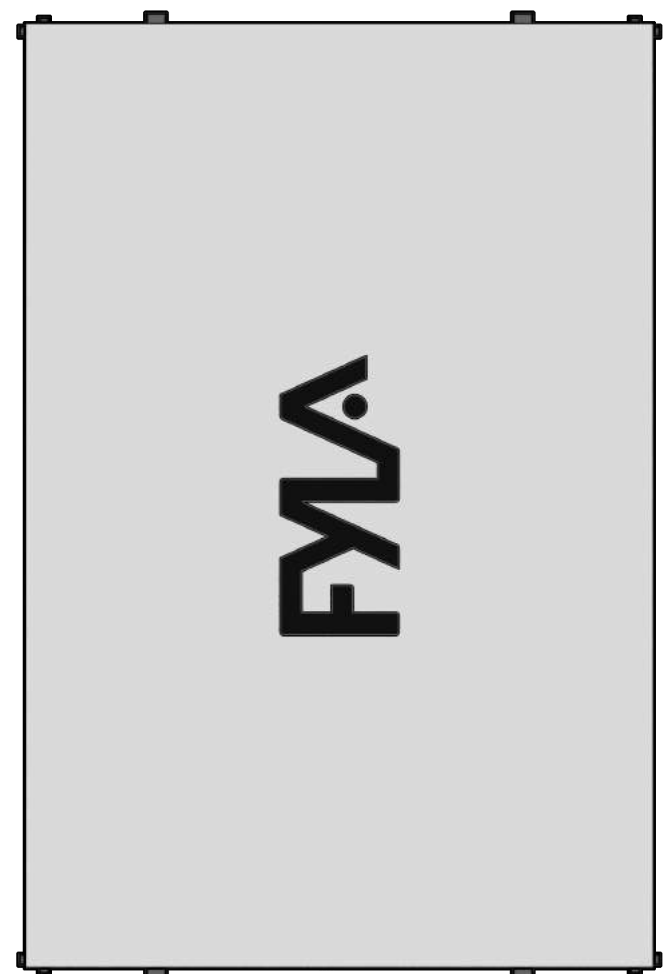
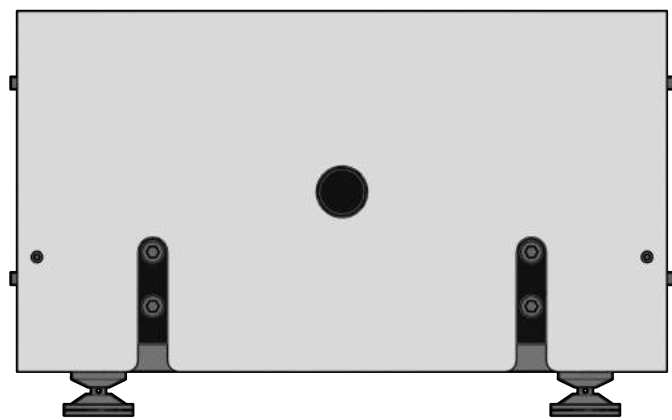


KONICA MINOLTA

datacolor 

+ Precision

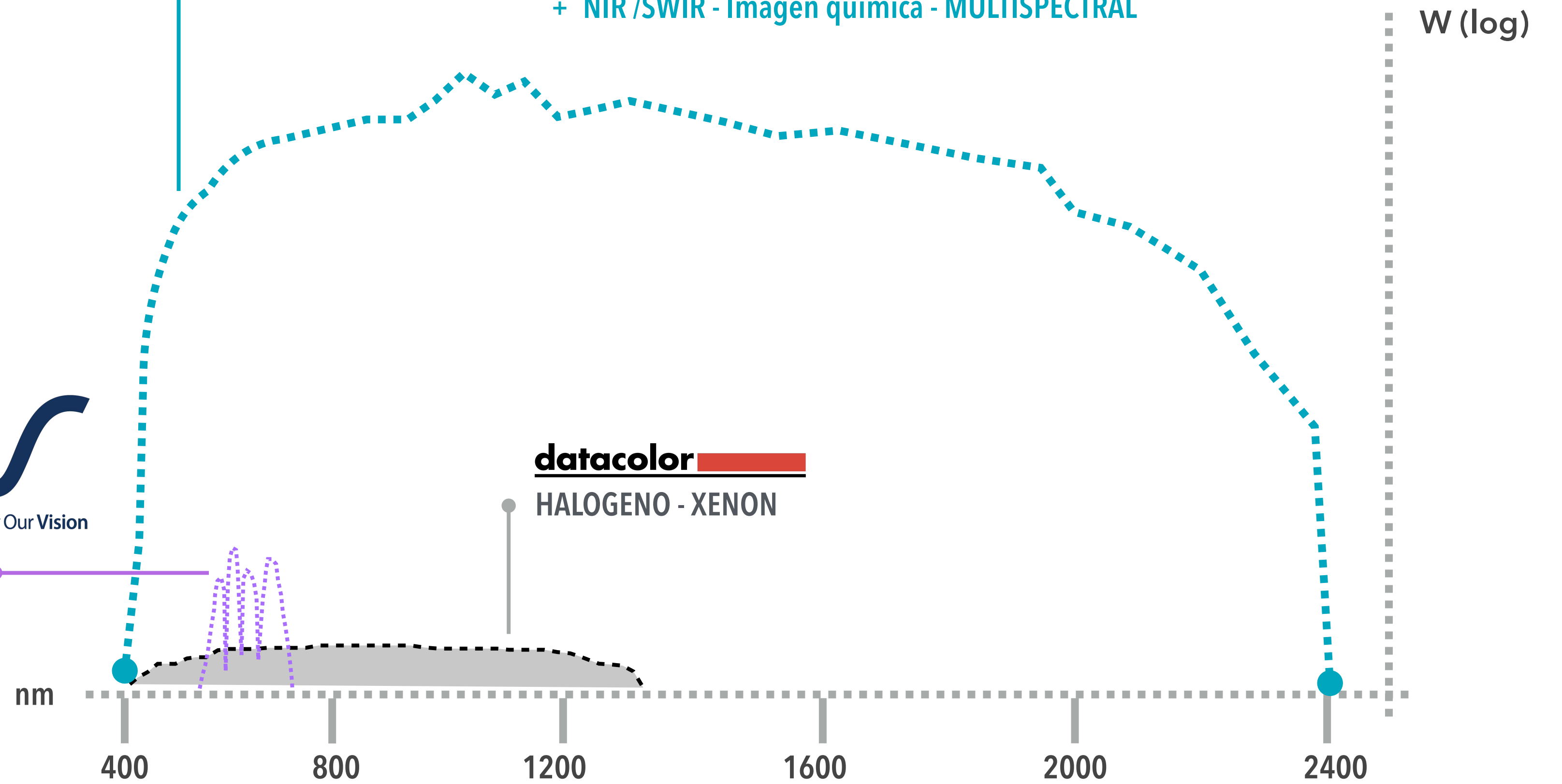
FYLA SCB MODULE



- + 1000x Potencia
- + 20000 mediciones/segundo
- + True Color - TODO el espectro visible - Inspeccion + Imagen
- + NIR /SWIR - Imagen quimica - MULTISPECTRAL

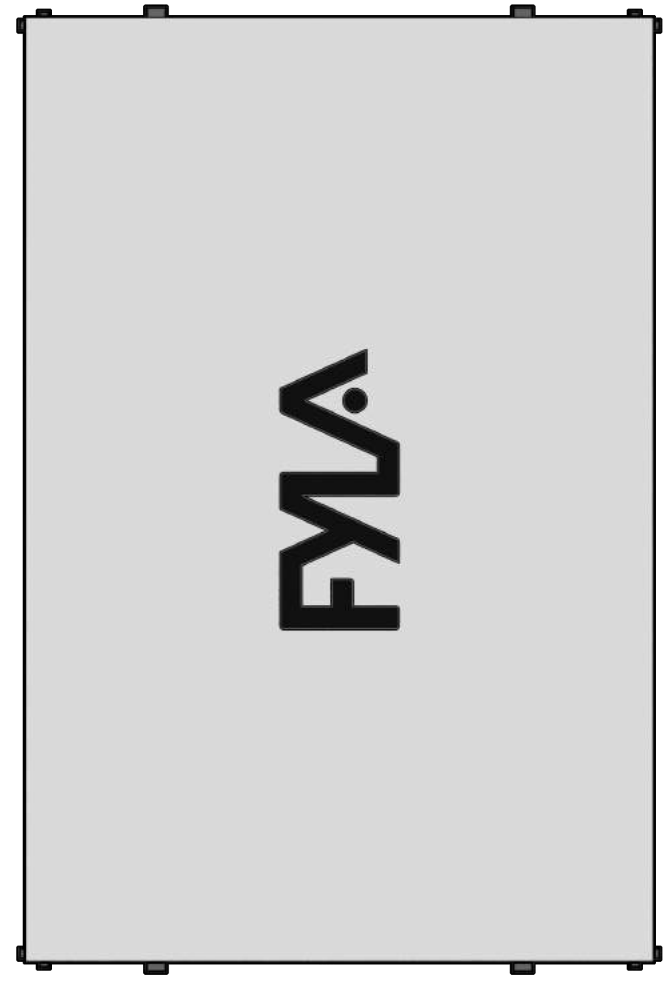
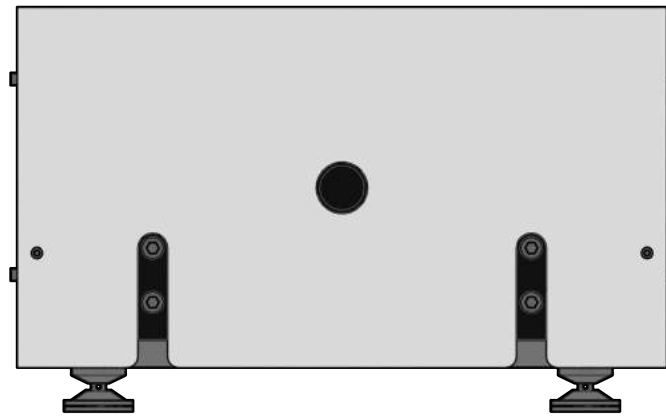


LED - RGB



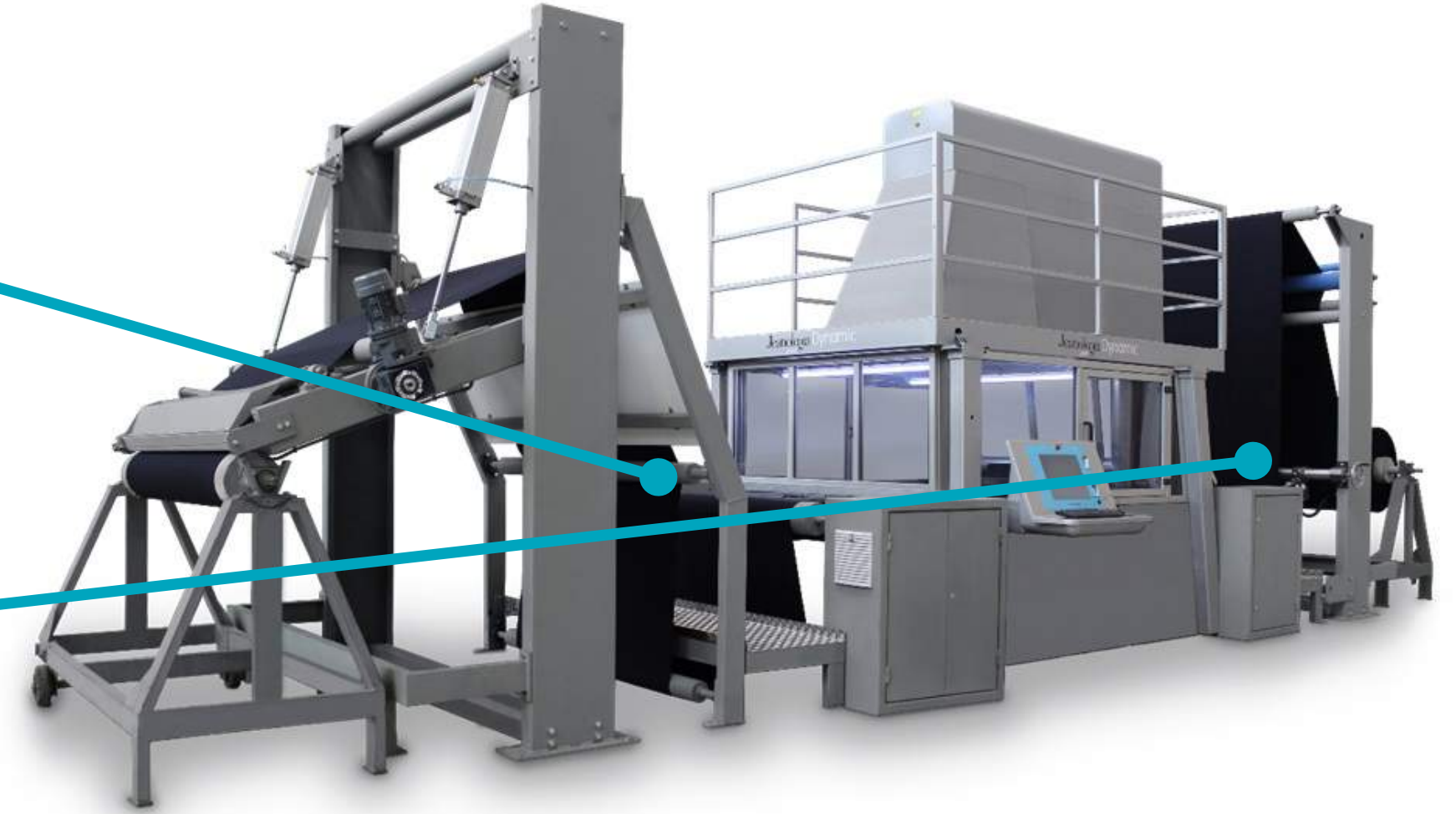
BELOW. Laser Roll-to-Roll systems - DYNAMIC model

FYLA SCB MODULE

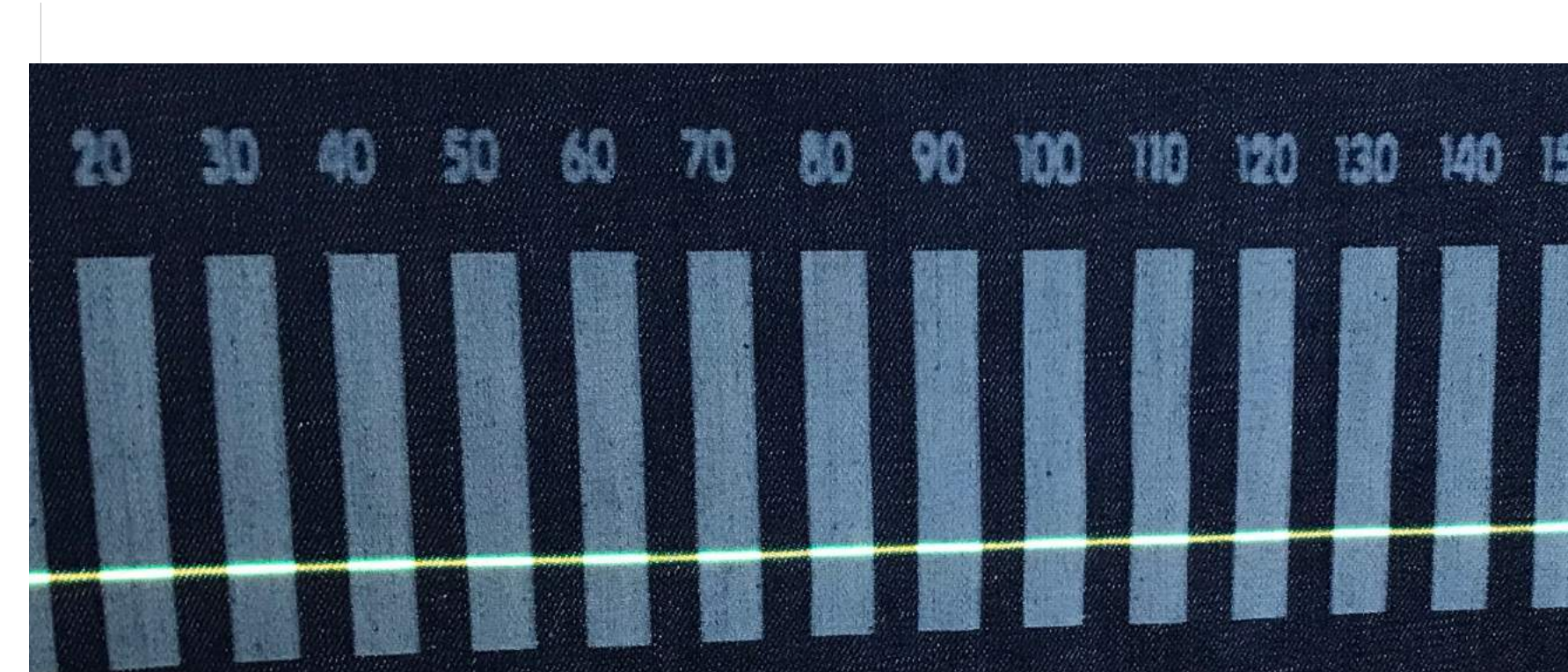
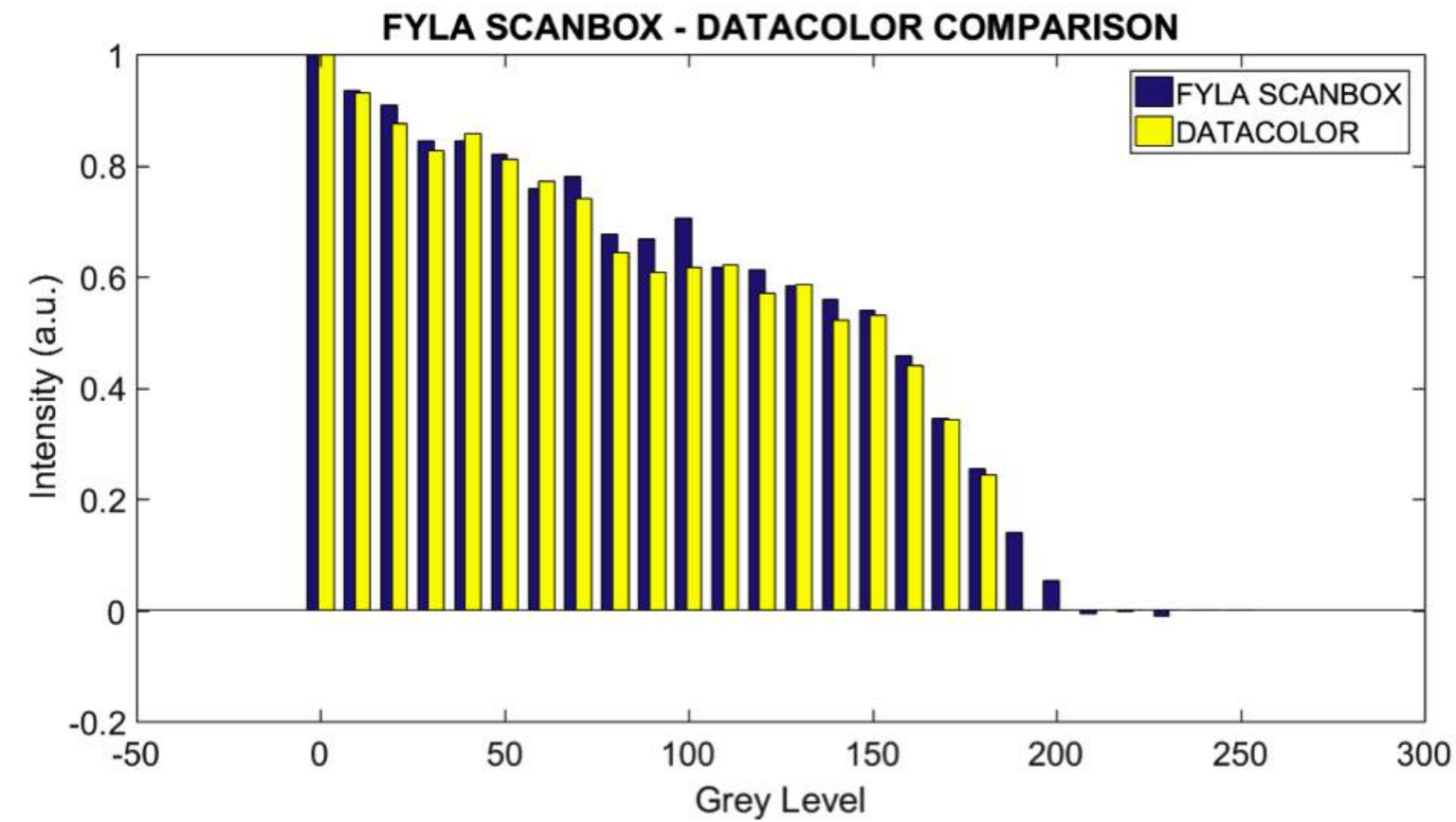


Measurement Area (Pre)

Measurement Area (Post)



BELOW. Denim piece treated by a Laser roll-to-roll system (below) with different intensities and Pixel times, and monitored in real time at 80 m/m for a 2m. wide, White line is brought by FYLA White laser measurement proprietary system





AMERICAN EAGLE
OUTFITTERS



IN-LINE (REAL)

- ▶ **PRECISION** - TRUE COLOR + NIR + SWIR - Todo en un sistema.
- ▶ **VELOCIDAD** - 20000 Muestras/seg
- ▶ **VERSATILIDAD** - 1mm / 2100mm - 800mm X 800 mm / dist. hasta 3 metros
- ▶ **ROBUSTEZ** - +15000 horas 24/7 vida util

ISMAEL ALMAZAN
Chief Executive Officer

ialmazan@fyla.com

