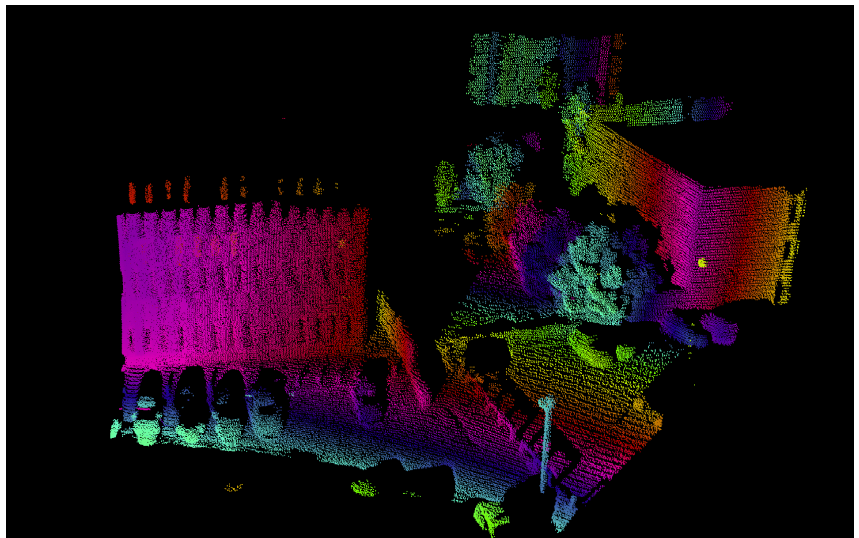


Management of dense point clouds for image fusion and object recognition in real time

About Beamagine

Beamagine was born in 2016 for commercializing imaging lidar sensors built on proprietary technology awarded by multiple patents granted all over the world. The company relies in accumulated knowledge in its engineers accumulated in twenty years of lidar, optomechanical, electronics and software development in university labs and workshops. Since then we've been developing innovative solutions and imaging lidar sensors to automotive, railway, maritime and space users, always in applications with demanding point cloud density or demand of sensor fusion procedures.

We develop robust, high performance lidar imaging solutions for sensing applications, in special related to innovative mobility and transport solutions based on autonomous vehicles and robotics. Currently, Beamagine has licensed patents and development programmes for automotive, while pursues growth in other markets, focusing in railway, maritime, and space applications.



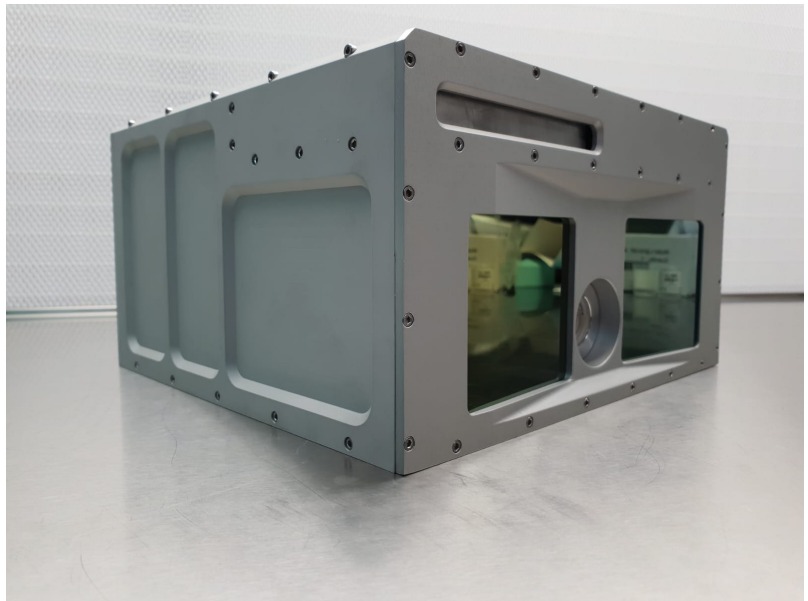
What we need?

Despite hardware is at the core of our innovations, delivering advanced complete solutions rely on dedicated software developments which enable our customers to take the most of our lidar point clouds and fusion algorithms. The candidate is expected to contribute expertise in most of the following fields:

- Programming in C++ and Linux
- Robotic Operating System (ROS), including real time operation
- Point Cloud Library
- Sensor fusion (2D and 3D, 2D and 2D, registration,...)
- Practical mplementation of SLAM algorithms and visualization
- Object segmentation, identification and tracking within dense point clouds.
- Machine learning, applied artificial intelligence.
- Communication standards in transport (CAN BUS, TCN, NMEA, others)

Our offer

We offer you a two-year position (which may be extended on joint agreement) within a growing company of world-class technological level in the Greater Barcelona area. Beamagine has currently a proprietary technology sensor which enable novel, unprecedented functionalities in machine vision systems. Several markets of application are currently identified and the contribution of a experienced



researcher in software would support our current resources and enable the development of customer oriented machine vision solutions in 3D. Overall, we offer you to work in the expanding field of 3D machine vision in real world applications, within an international team working in cutting edge industrial applications. Our vision for you after a successful project is to potentially become the future responsible for software and data processing developments within the company.

Languages

- Fluent spoken and written English is mandatory, at report writing level and international teamwork discussion.
- Basic Catalan and/or Spanish are recommended.
- Other languages, in special French and German, will be strongly valued.

Other skills

- PhD or posdoc with two years of experience in relevant field (robotics, machine vision, SLAM...)
- No residence in Spain in the past two years, according to the Call mandate.
- Familiar with C, C++, Python
- Experience in international technical teamwork and reporting.
- Experience in customer-oriented software development.
- Creativity, professional, self-motivated

Contact

If interested send us a CV and a motivation letter in English. Further information available at

Santiago Royo
Business Development
santiago.royo@beamagine.com
+34 648773478
<https://beamagine.com>