

An aerial photograph of a city, likely Paris, with a network diagram overlaid. The diagram consists of a central blue circle with several lines radiating outwards to other blue circles, representing a network or project structure. The background shows a mix of urban buildings, green spaces, and a river.

list
cea tech

ESMERA PROJECT – OPEN CALL OPPORTUNITIES

DeepTech4Good Investor's day Paris | 2019/11/13

Pascale BETINELLI | pascale.betinelli@cea.fr



What is our offer

Who we are



Who we are

Alternative Energies and Atomic Energy Commission



16 000
People

5 B€
Operating budget



CEA
DEN

LOW CARBON ENERGY



CEA
DAM

DEFENSE SECURITY



CEA
DRF

FUNDAMENTAL RESEARCH



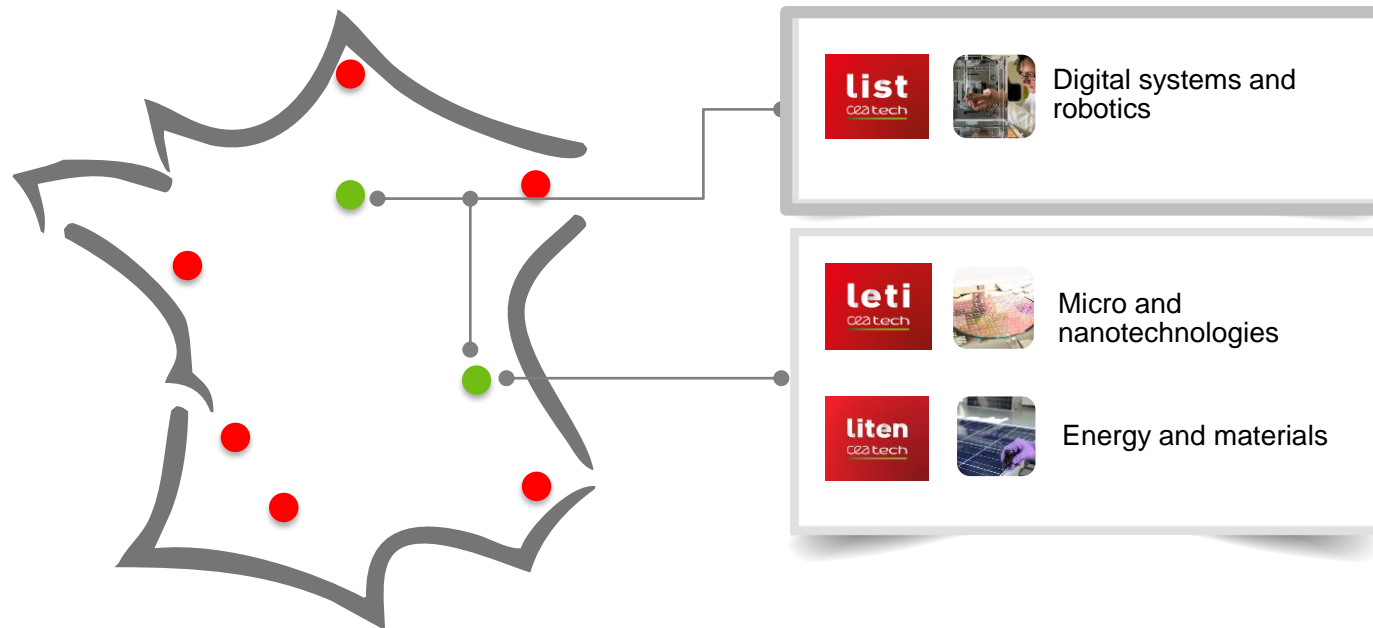
CEA
TECH

KEY ENABLING TECHNOLOGIES

50 years of experience to contribute to the industrial competitiveness through technological innovation and industrial transfert

3 INSTITUTS

6 Regional Platforms of Technology Transfer





**What is our
offer**

Leading local cluster



Merging EU project and Labels



DIGIHALL

DIH focus: AI, CPS, robotics, cybersecurity
INDUSTRY || MOBILITY || HEALTHCARE || ENERGY || SECURITY

40% of R&D in France

R&D hub for multinationals

Driving ecosystem initiatives

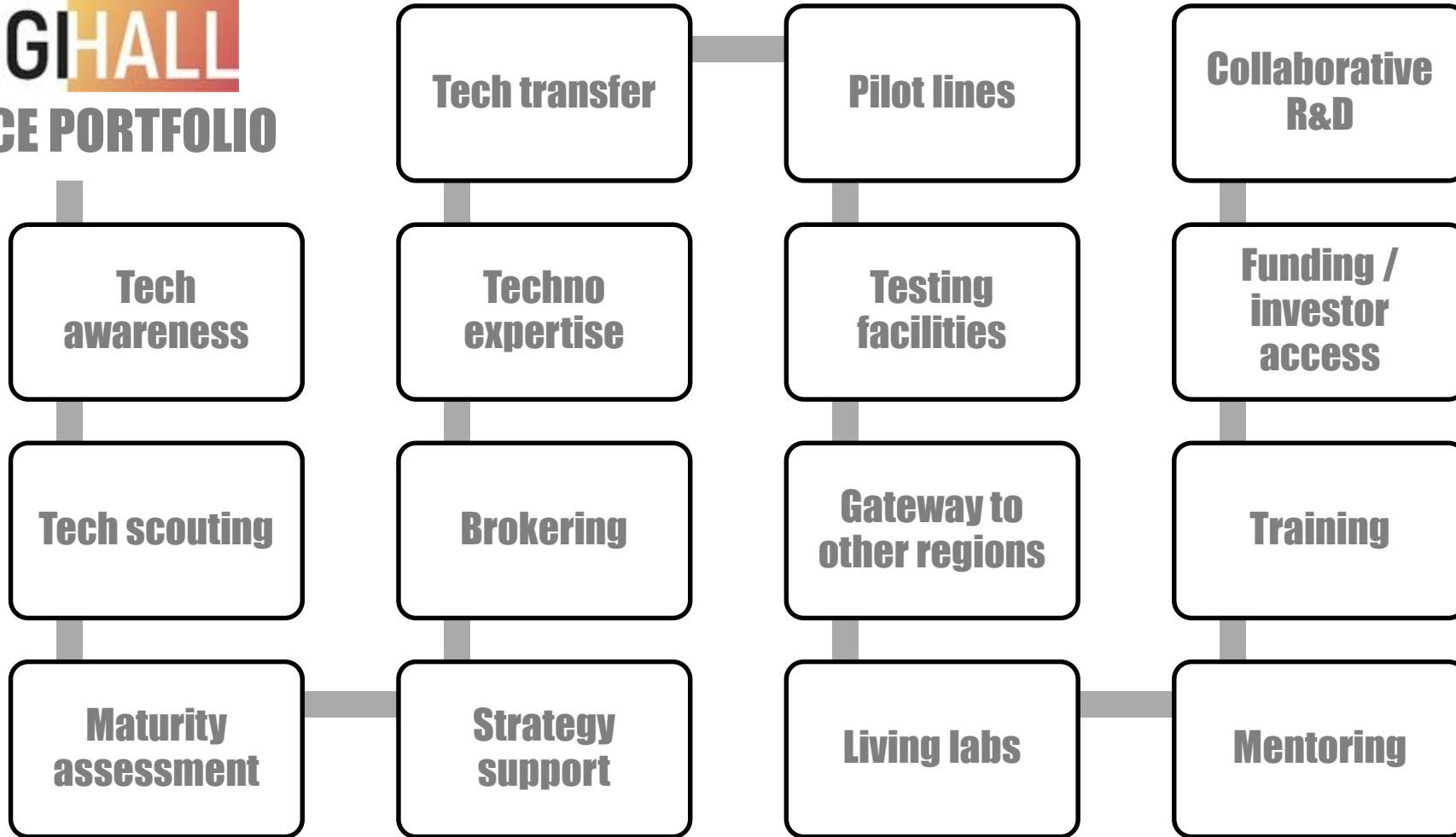


#1 EU Region in AI and IoT patents

Leading clusters for systems, IT, mobility

... and innovation support structures

DIGHALL SERVICE PORTFOLIO

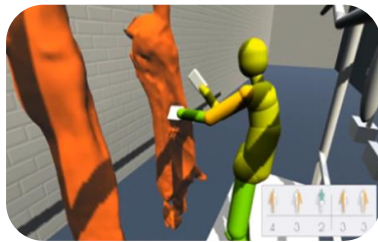




SMART - Saclay
Manufacturing And
Robotics Platform



FFLOR – Trémery
Robotic and digital for
future factory



AXESS – Nantes
Gesture assistance for
agri-food



TROPIC - Bordeaux
Tele-RObotique for Industrial Process
and Control



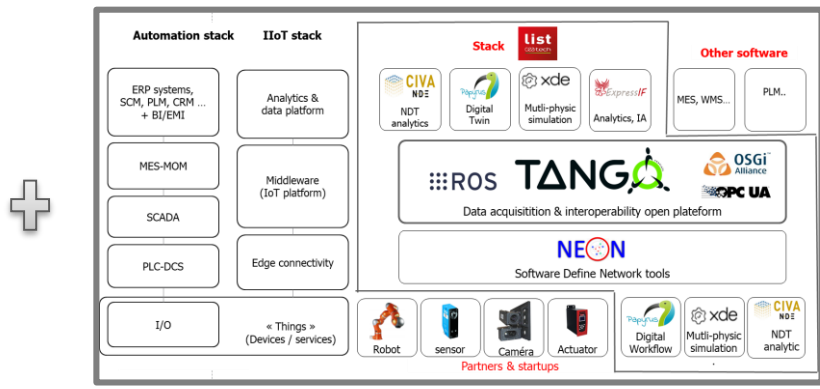
CLINATEC - Grenoble
Medical assistance

RIF INFRASTRUCTURE - HOW IT WORKS?

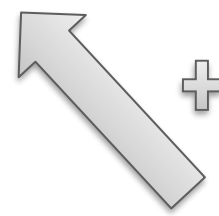
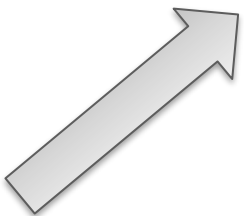
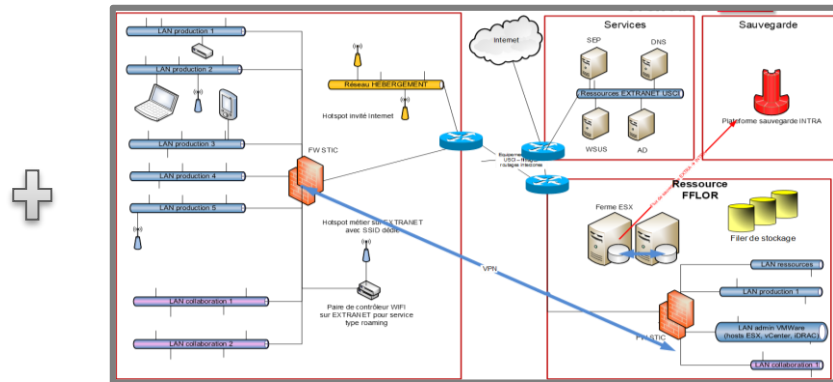
Physical platform



Modular and open software framework



IT infrastructure with network and private cloud



Funding access

Partners

Collaborative project or initiative



What is ESMERA?

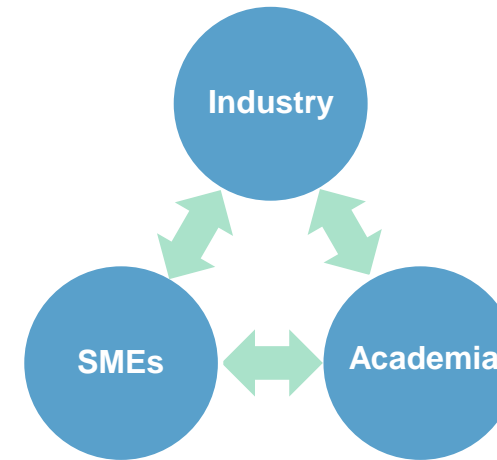
ESMERA: European SMEs Robotics Applications

Website: <http://www.esmera-project.eu/>

- H2020 Project - ICT-27-2017
- Funding of 4.4 million euro for experiments
- **Start Date:** 01.01.2018
- **End Date:** 28.02.2022

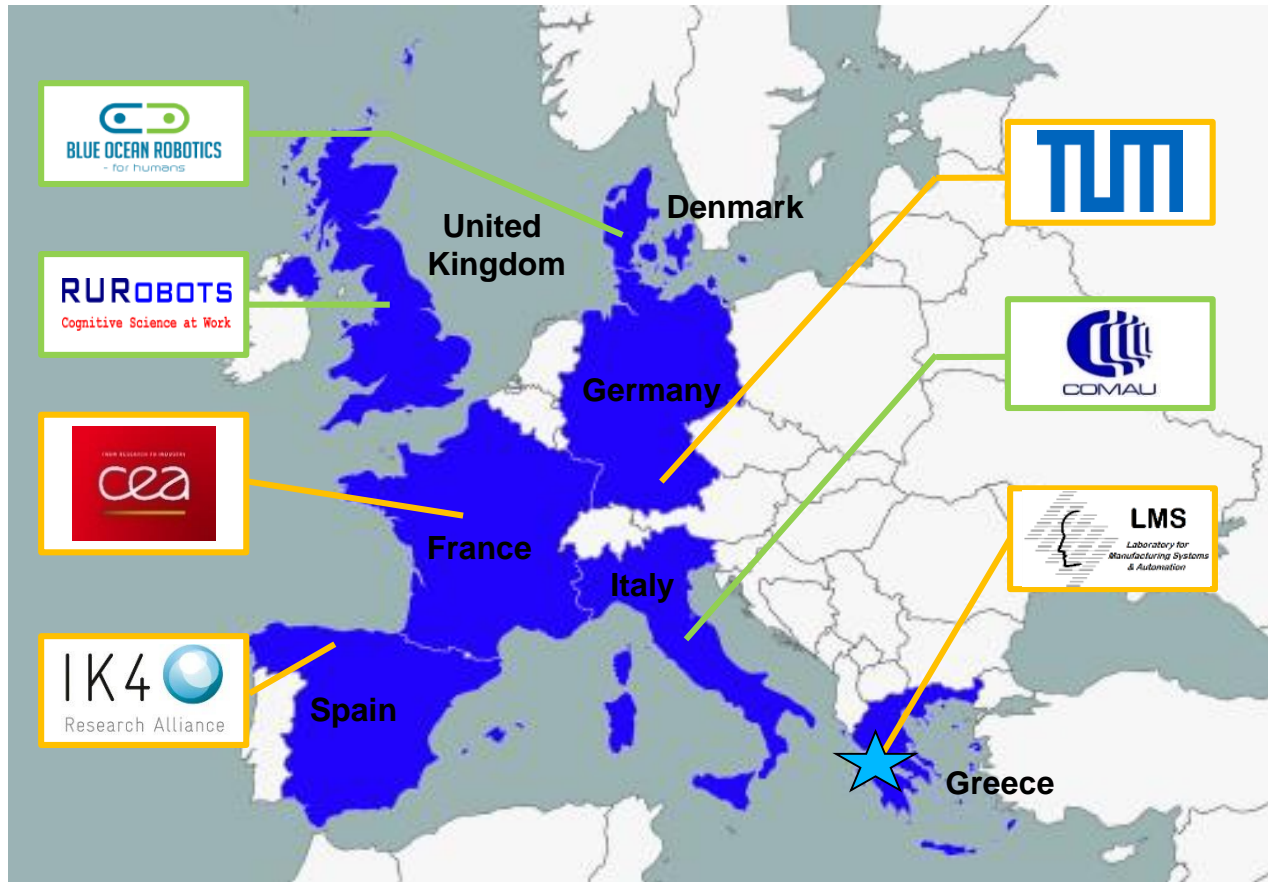
ESMERA Objectives

- ✓ Unlock the **innovation potential** of robotics SMEs
- ✓ **Support EU SMEs** to materialize, test & promote robotic technologies
- ✓ Provide **industrial, real-life challenges** defined by key EU companies



What we offer:

- ✓ **CCs**: environment for development, evaluation, testing & demonstration
- ✓ **direct financial support** through a cascade funding mechanism
- ✓ **industry partners**: mentoring & support in business cases
- ✓ industrial associations & **networks**: direct promotion of the solutions



Project Coordinator: Laboratory for Manufacturing Systems and Automation - LMS, University of Patras

R&D

Competence Centers provide:

- ✓ test environments for challenges
- ✓ equipment & services
- ✓ expert support on deployment & assessment of robotics solutions
- ✓ support in networking



Industry

Facilitators offer support in:

- ✓ mentoring & developing business cases
- ✓ developing a concept design for end-users
- ✓ developing business plans & impact analysis
- ✓ managing the complete chain (idea to market)



ESMERA 1st open call results

- ✓ **1st Open Call**
 - ✓ **Opened:** August 1st 2018
 - ✓ **Closed:** November 9th 2018
- ✓ **31** Proposals evaluated
- ✓ **15 countries** participated
- ✓ **63 entities** included in the proposal consortia
 - ✓ **37** Companies
 - ✓ **10** Non profit organizations
 - ✓ **12** Higher education
 - ✓ **4** Public bodies
- ✓ **12** experiments selected for funding
 - ✓ **4 Exp.** Manufacturing area
 - ✓ **3 Exp.** Agricultural area
 - ✓ **3 Exp.** Energy area
 - ✓ **2 Exp.** Construction area
 - ✓ **Total: 2,197,230.00 EUR.**
- ✓ Experiments started April 15th 2019



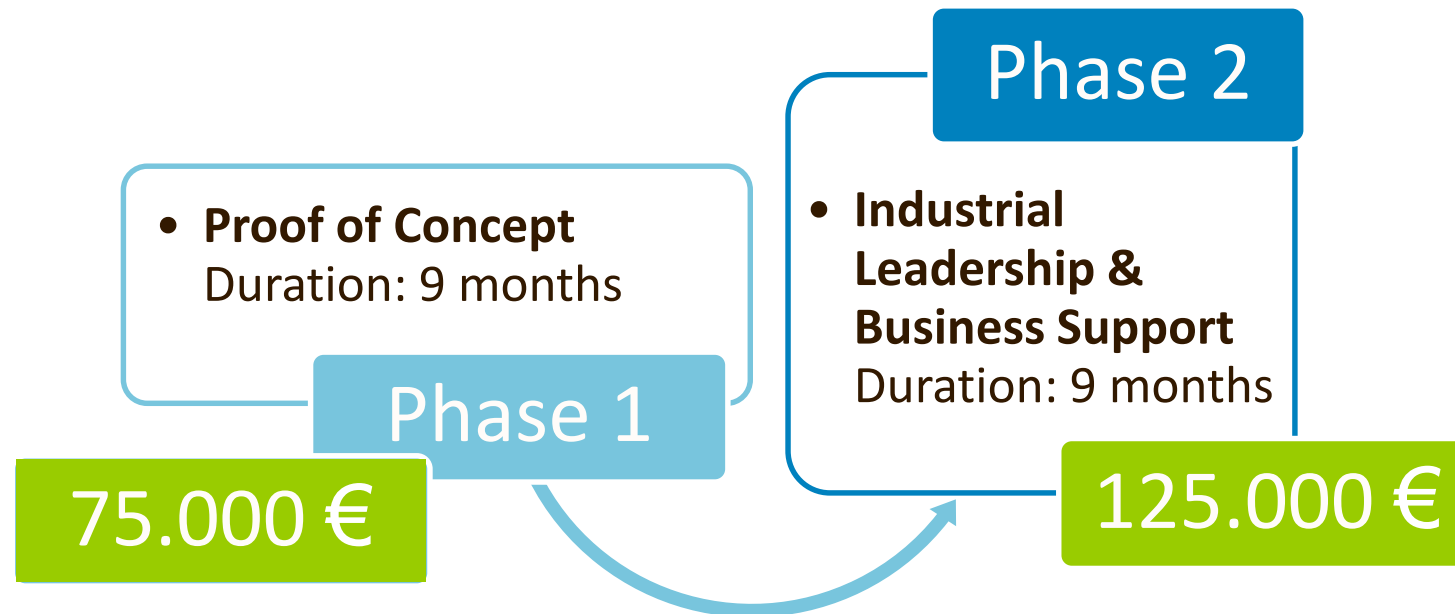
ESMERA Concept



ESMERA 2nd Open Call

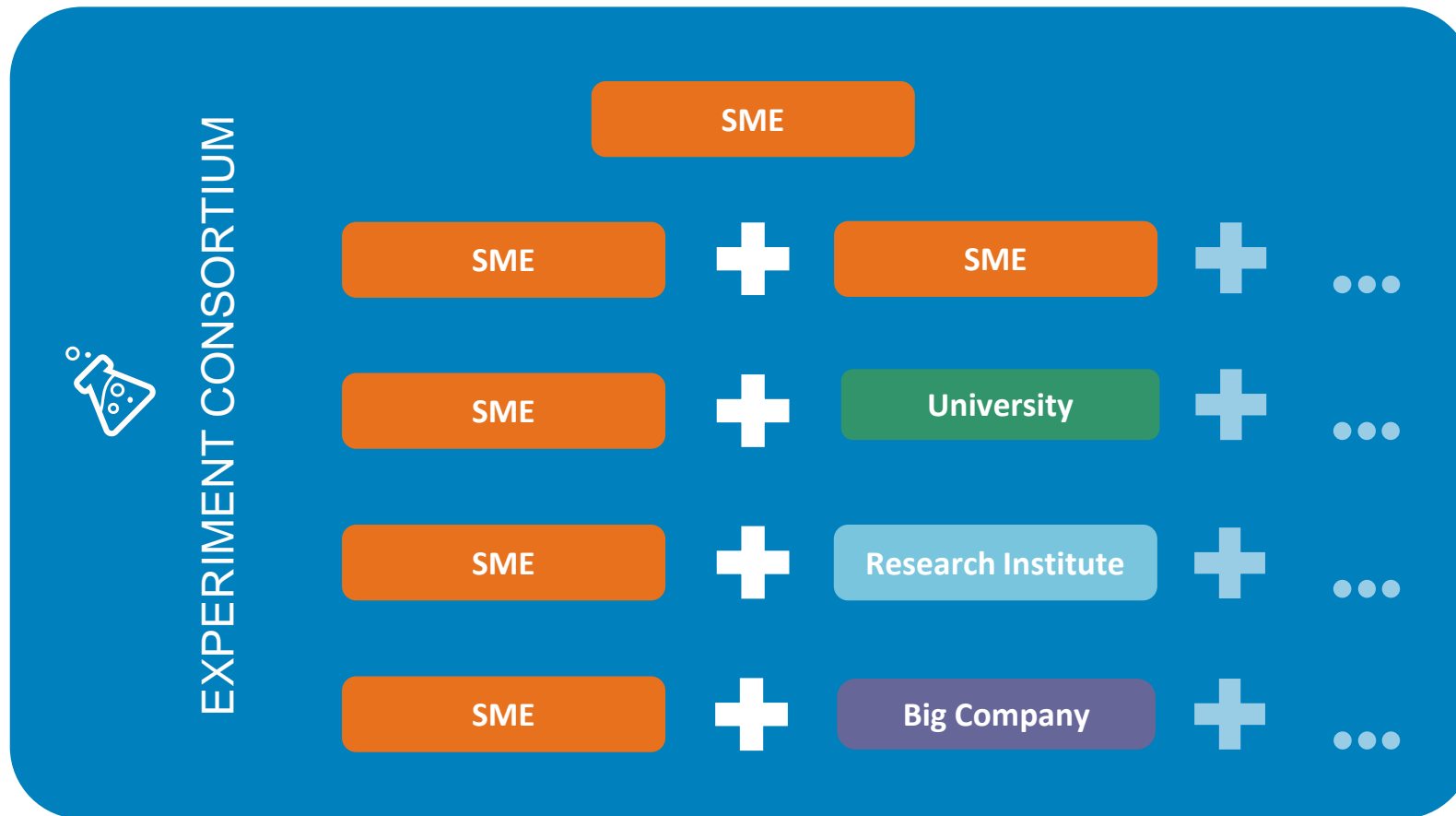
September 2019 - December 2nd, 2019

Results: End of February

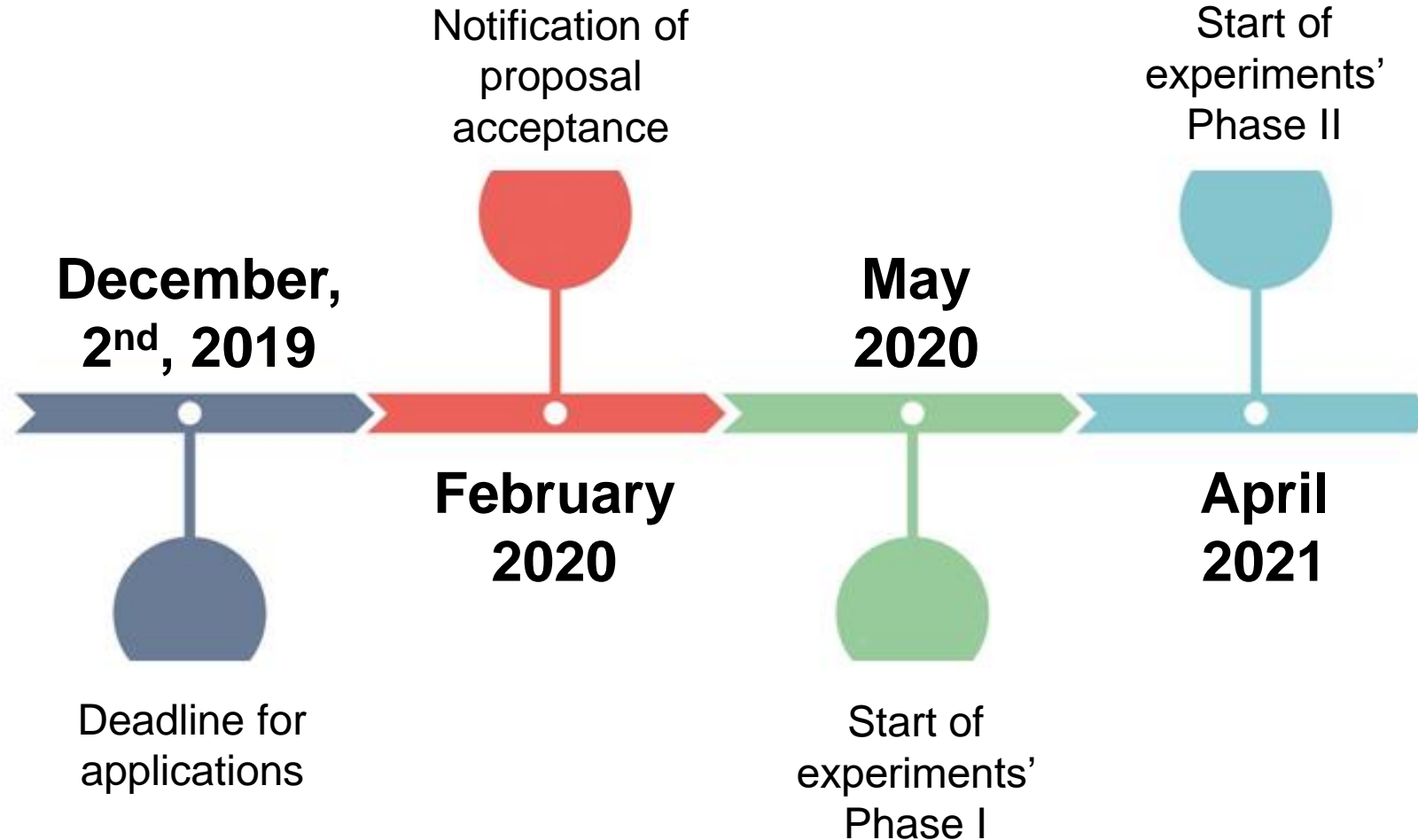


ESMERA Experiment Consortia

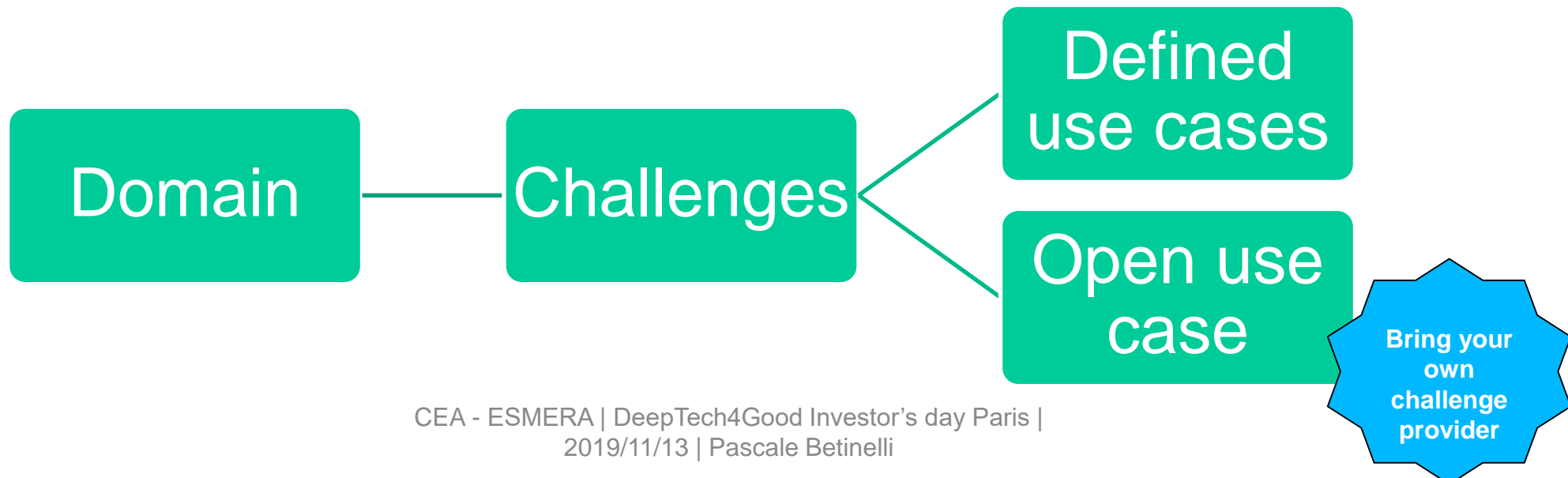
- Only one SME or
- A consortium with at least 1 robotics SME



Timeline for the Open Call



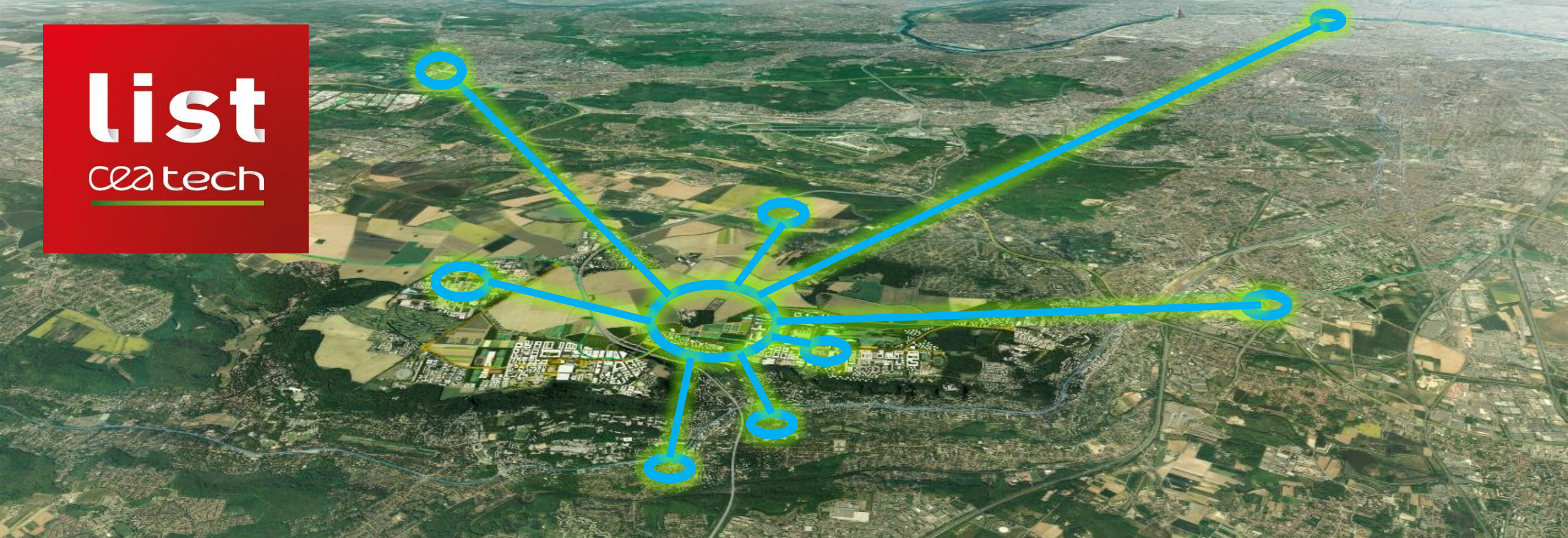
5 MANUFACTURING CHALLENGES	2 ENERGY CHALLENGES	2 CONSTRUCTION CHALLENGES	1 AGRICULTURE CHALLENGE
2 FOOD PROCESSING CHALLENGES	1 RETAIL CHALLENGE	3 HEALTHCARE CHALLENGES	3 EMERGENCY RESPONSE CHALLENGES



INTERESTED?

If you aim at providing a solution to the challenges:

- Visit ESMERA website for further information on the Open Call:
www.esmera-project.eu
- Not sure that your proposal is in scope of ESMERA?
Hand in your **pre-proposal** via the project's submission page: <http://opencalls.esmera-project.eu>
- Any **questions**?
 - Check FAQs in our website <http://www.esmera-project.eu/faqs>
 - Please ask us at opencalls@esmera-project.eu
- Don't miss the deadline of the first open call: **December 2nd, 2019**
- Don't forget that there can be 1 proposal per applicant



QUESTIONS?

Commissariat à l'énergie atomique et aux énergies alternatives
Centre de Saclay | Bâtiment 565 - Site DIGITEO | 91191 Gif-sur-Yvette
T. +33 (0)1 69 08 08 00
Etablissement public à caractère industriel et commercial | RCS Paris B 775 685 019